

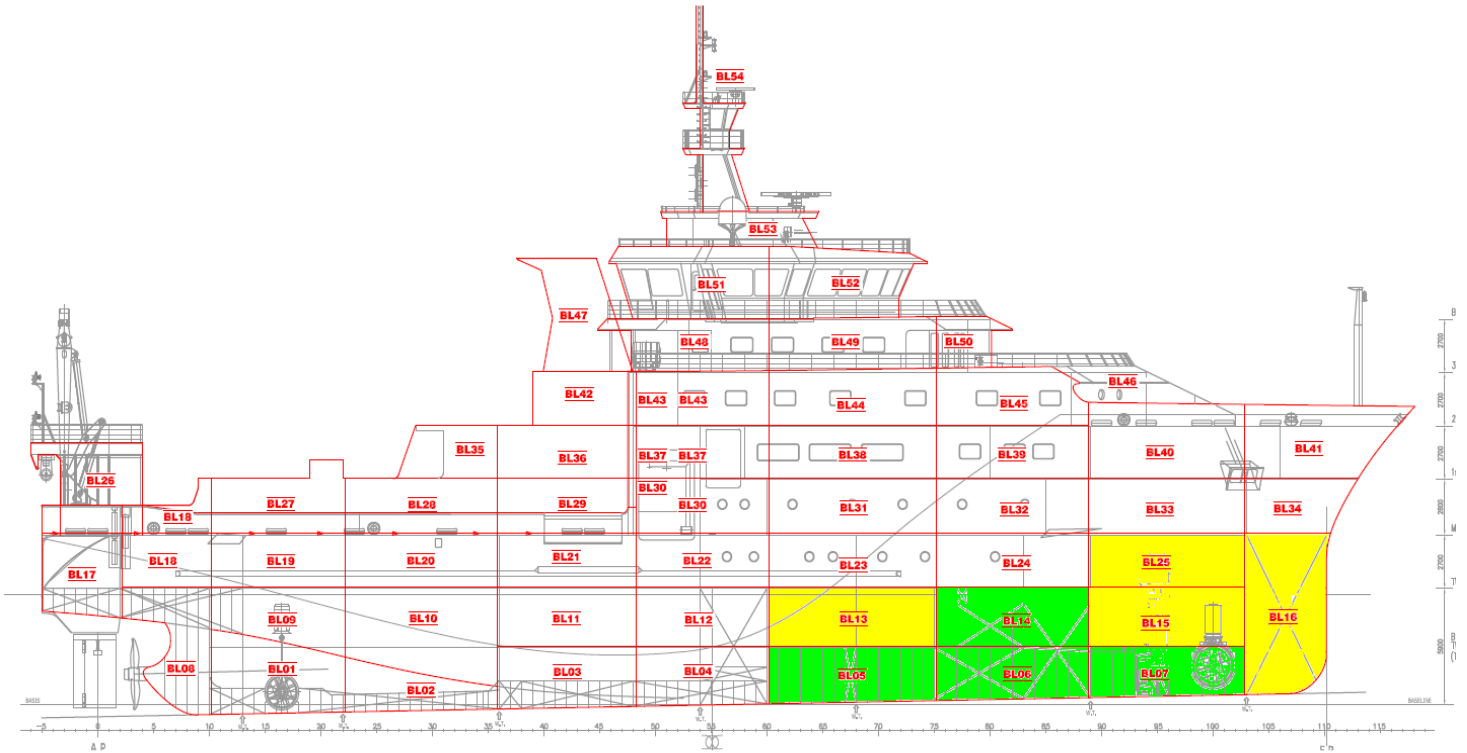
Dr. Fridtjof Nansen Replacement – Block construction

AG-460 – Hull build progress – Status by 26th February 2015

- Steel cutting
- Under construction
- Blocks on slipway

First steel cut: 13.01.2015

Keel Laying:



PLANNED BUILDING SEQUENCE OF BLOCKS– ref. Master plan Rev. 1

1	2	3	4	5	6	7	8	9	10
06 – 50%	05 – 15%	07 – 5%	14 – 15%	15 – 100%	04	13 – 100%	03	16 – 100%	12
11	12	13	14	15	16	17	18	19	20
25 - 40%	02	11	01	10	09	24	08	23	22
21	22	23	24	25	26	27	28	29	30
21	20	19	18	32	17	31	33	30	34
31	32	33	34	35	36	37	38	39	40
39	38	40	37	41	29	28	36	27	26
41	42	43	44	45	46	47	48	49	50
35	44	43	42	45	46	47	49	48	50
51	52	53	54						
51	52	53	54						

NOTE! Blocks are defined as **80%** completed when ready to put on slipway.

General comments:

- Good quality of steelwork
- Progress slightly behind schedule according to master plan – rev 1.
- Launch of Møkster vessel (AG 461) postponed until April 18th. Fabrication of DFN blocks will continue in workshops and will be stored on quayside until slipway is ready.
- Majority of blocks is planned to be sandblasted/primed prior to assembly on slipway.
- AG says postponed launch of AG 461 not will have impact on DFN schedule.

BL 06



BL 05



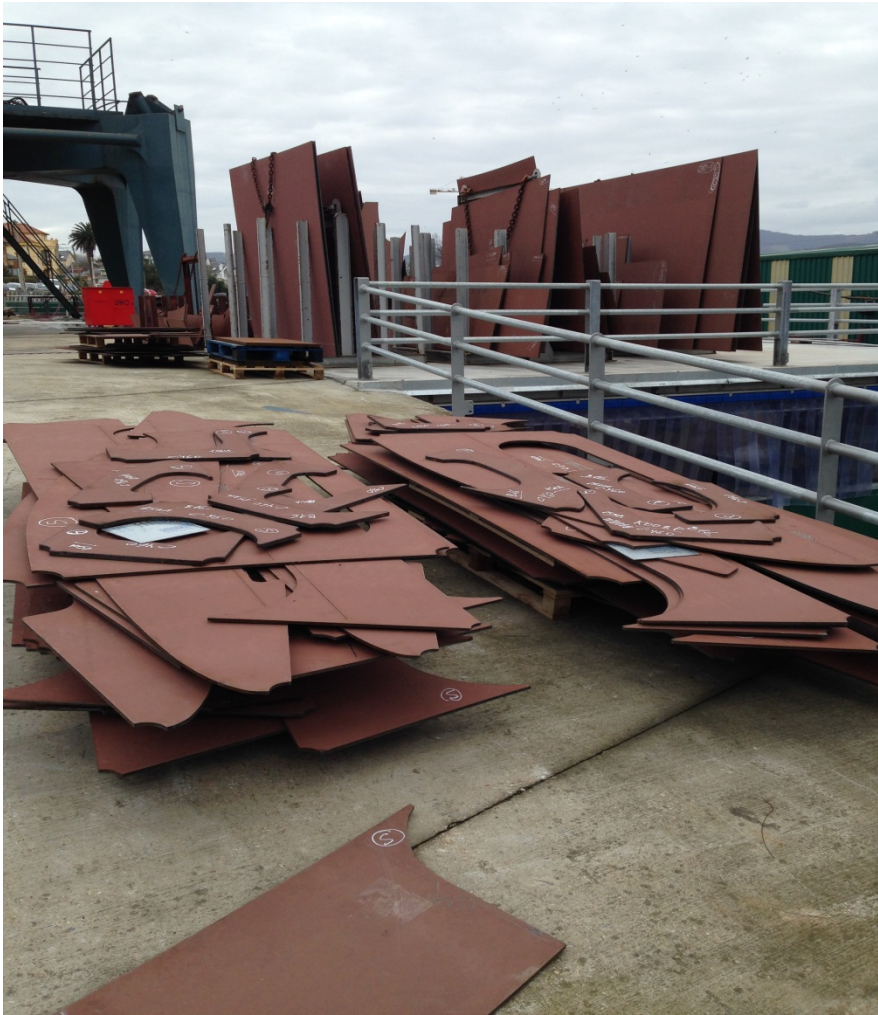
Casings for EM 302 & SBP 300 ready for installment in BL 05



BL 14 - Tween Dk. with cofferdam between Clean SW Lab & GW tank – BL06 in background



Cuttet steel for BL 15 & 16



Cuttet steel for BL 07 – just started fabrication

